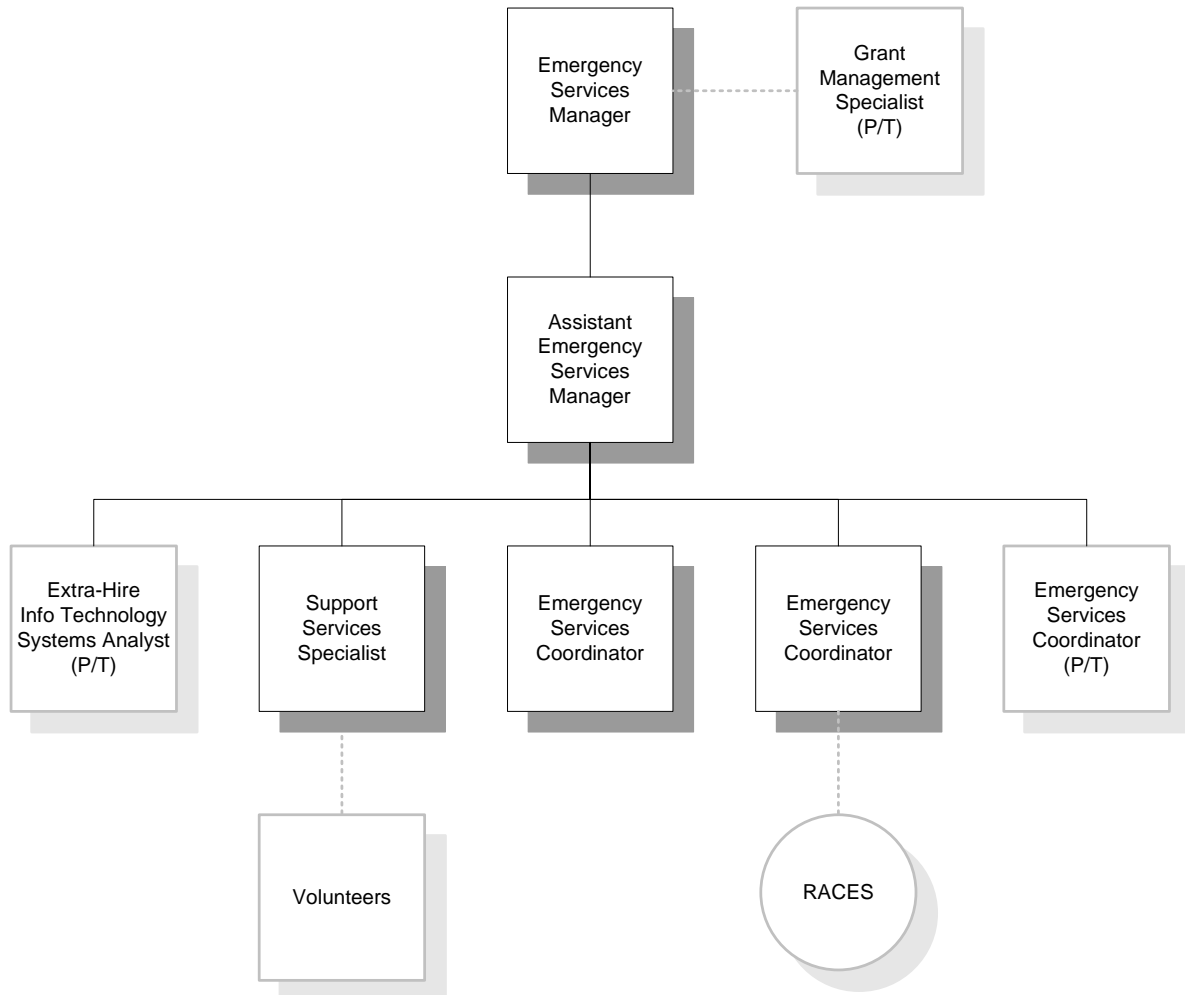


# MARIN COUNTY SHERIFF OFFICE OF EMERGENCY SERVICES (OES)

---

## STAFF DUTIES AND ASSIGNMENTS



**MARCH 2006**



Marin County Sheriff, Office of Emergency Services  
3501 Civic Center Drive, #266  
San Rafael, CA 94903  
415/499-6584  
415/499-7450 (fax)  
[oes@co.marin.ca.us](mailto:oes@co.marin.ca.us)  
<http://www.co.marin.ca.us/disaster>